

# MAJOR CHORD ESSENTIALS!

## 3 MUST KNOW PATTERNS

RANDY HUNTER

IN THIS LESSON, YOU'LL LEARN THREE "MUST KNOW" MAJOR CHORD PATTERNS FOR ALL JAZZ MUSICIANS. THESE PATTERNS ARE BASED ON A COMBINATION OF THE MAJOR SCALE AND THE MAJOR 7 ARPEGGIO.

IN THE VIDEO, I'LL EXPLAIN THE PATTERNS IN THE KEY OF F MAJOR. WHILE I HAVE INCLUDED CHEAT SHEETS WITH THE PATTERNS WRITTEN THROUGH THE KEYS, YOUR GOAL WILL BE TO LEARN EACH PATTERN THROUGH ALL 12 KEYS WITHOUT READING IT.

### ESSENTIAL MAJOR CHORD PATTERN #1

1. USING THE NUMBERED MAJOR SCALE, LOCATE THE 1-3-5-7 ARPEGGIO TONES.
2. BEGIN THE PATTERN WITH A LOW 7TH TONE. PLAY THE ASCENDING 1-3-5 TONES AS A TRIPLET THAT TARGETS THE UPPER 7TH TONE. FOLLOW THIS WITH THE DESCENDING 5-3-1 TONES TARGETING THE LOW 7TH TONE.
3. REPEAT FOR ACCURACY AND FLUENCY.

#### F MAJOR SCALE



## ESSENTIAL MAJOR CHORD PATTERN #2

THIS PATTERN COMBINES THE ASCENT FROM PATTERN #1 WITH A SERIES OF DESCENDING 7-5-3-1 TONES EMBELLISHED WITH LOWER NEIGHBORING SCALE TONES. FOR THIS PATTERN EXPAND THE LOW RANGE OF YOUR MAJOR SCALE TO INCLUDE THE 6.

1. BEGIN WITH THE ASCENDING PORTION OF PATTERN #1 TARGETING THE UPPER 7TH TONE.
2. DROP FROM THE 7TH TO THE 5TH, THEN ASCEND BACK TO THE 7 VIA A SCALE TONE.
3. CREATE SIMILAR 4-NOTE GROUPS BETWEEN THE 5-3, THE 3-1, AND THE 1-6 TONES. THE FINAL DESTINATION IS THE 7.

ANTICIPATE.....

\*ST = SCALE TONE

## ESSENTIAL MAJOR CHORD PATTERN #3

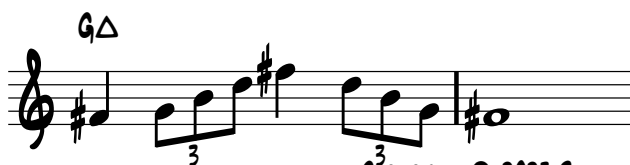
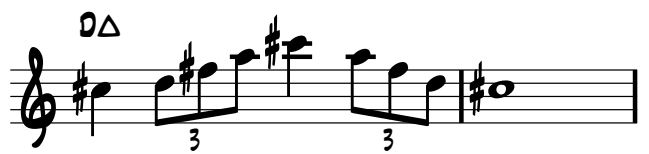
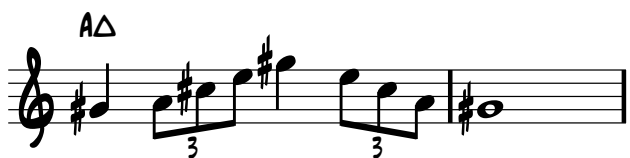
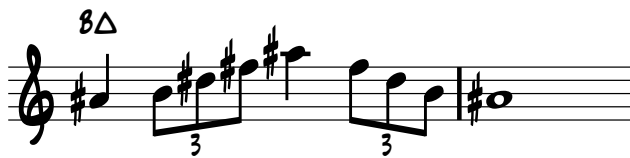
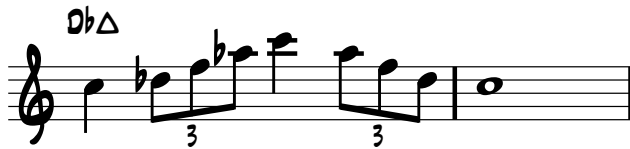
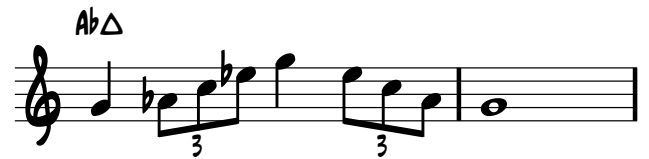
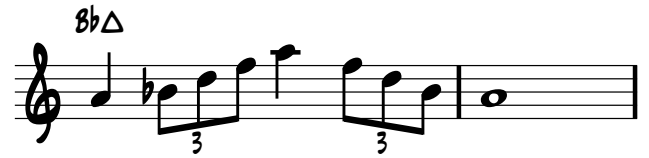
THIS PATTERN COMBINES THE ASCENT FROM PATTERN #1 WITH A SERIES OF DESCENDING 7-5-3-1 TONES EMBELLISHED WITH UPPER NEIGHBORING SCALE TONES. FOR THIS PATTERN EXPAND THE UPPER RANGE OF YOUR MAJOR SCALE TO INCLUDE THE 9.

1. BEGIN WITH THE ASCENDING PORTION OF PATTERN #1 TARGETING THE UPPER 7TH TONE.
2. ASCEND FROM THE 7 TO THE 9TH VIA A SCALE TONE, THEN DROP BACK TO THE 7.
3. CREATE SIMILAR 4-NOTE GROUPS BETWEEN THE 5-7, THE 3-5, AND THE 1-3 TONES. THE FINAL DESTINATION IS THE 7.

ANTICIPATE.....

\*ST = SCALE TONE

## ESSENTIAL MAJOR CHORD PATTERN #1 - CHEAT SHEET



## ESSENTIAL MAJOR CHORD PATTERN #2 - CHEAT SHEET

F $\Delta$   
 B $\flat$  $\Delta$   
 E $\flat$  $\Delta$   
 A $\flat$  $\Delta$   
 D $\flat$  $\Delta$   
 G $\flat$  $\Delta$   
 B $\Delta$   
 E $\Delta$   
 A $\Delta$   
 D $\Delta$   
 G $\Delta$   
 C $\Delta$

### ESSENTIAL MAJOR CHORD PATTERN #3 - CHEAT SHEET